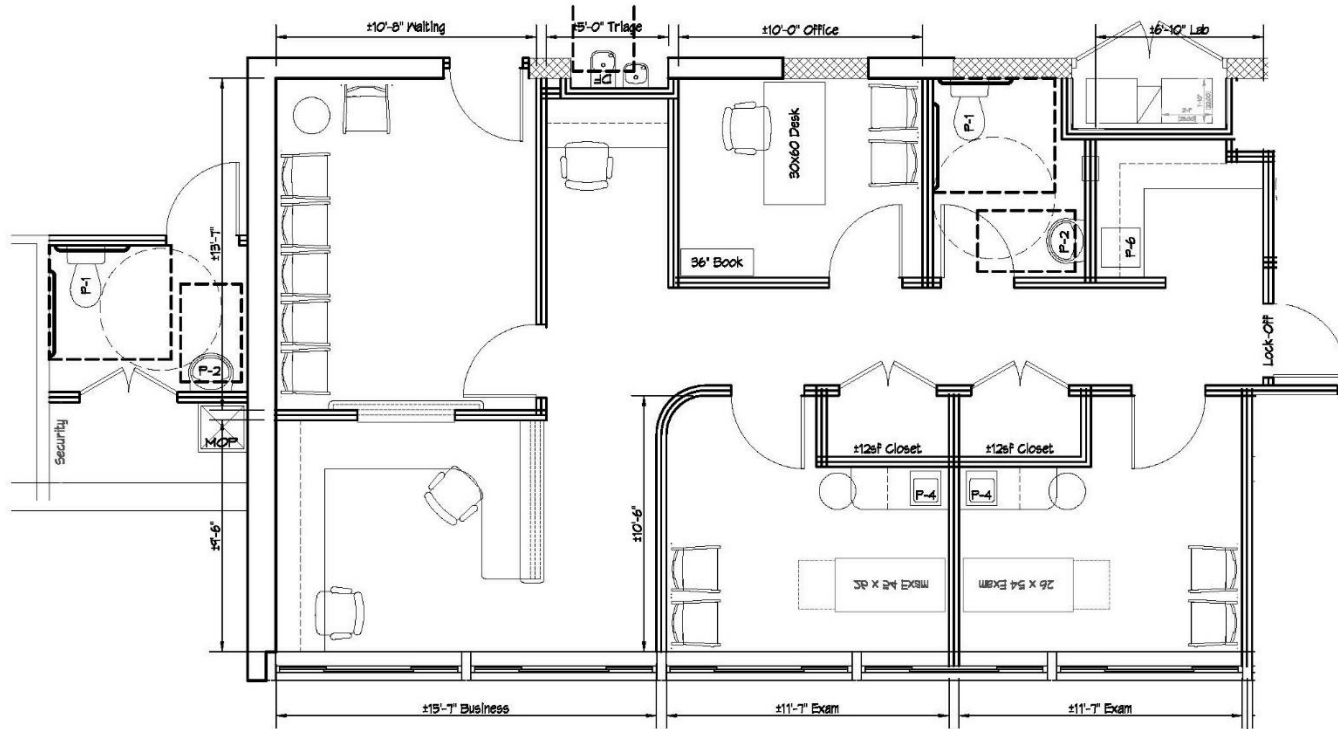


ALEXANDRIA SHARED MEDICAL



Suite 130 Available for **Shared Medical Use**
\$295/day fully furnished, equipped and supplied – Min. 1 day/week for 1 year
Still Available Mondays, Saturdays and Sundays
1050 sf (rentable square feet include core factor of 5%)

Pricing and availability as of April 2024 and subject to change

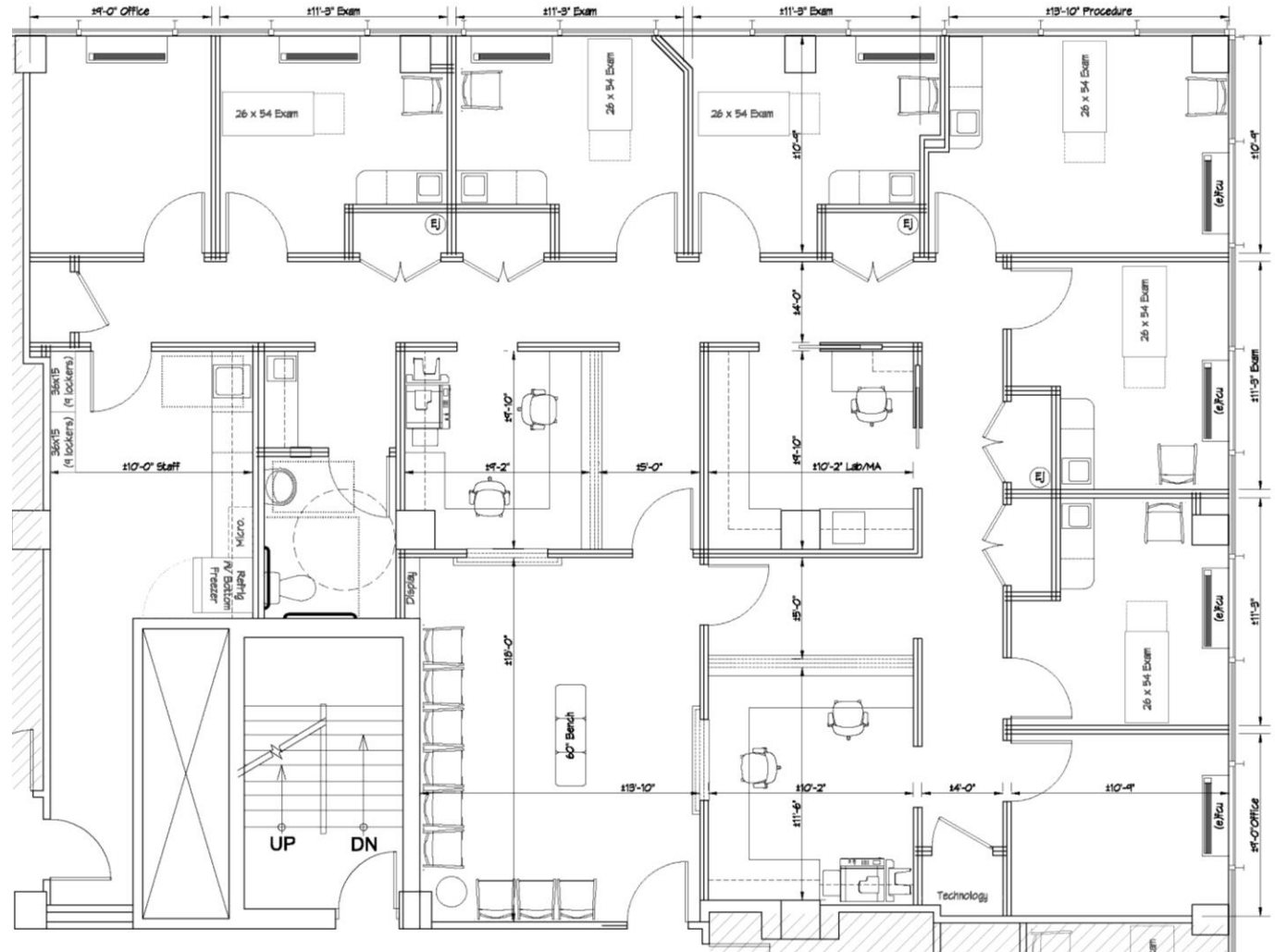
COMING LATE 2024
205 S Whiting Street
Alexandria, VA 22304

**PRE-CONSTRUCTION
PRICING: \$500/day**
6 exam rooms
2600 sf

Suite 204

- **Shared Medical Use**
- \$500/day fully furnished, equipped and supplied
- Min. 1 day/week for 1 year

Near NEW Inova Alexandria Hospital Location at Landmark



(rentable square feet include core factor of 5%)

Pricing and availability as of April 2024 and subject to change