

Bradlee Office Building

3543 W. Braddock Road
Alexandria, VA 22304

HIGHLIGHTS

- Just off I-395 at the King Street Exit
- Close to a variety of restaurants, banks, grocery, pharmacies, post office and much more
- Fully furnished and equipped medical office
- ADA compliant restrooms
- Generous storage
- Free surface parking
- All-inclusive pricing
- Other tenants in the building include: chiropractic and wellness services, general medicine, oncology, pediatric cardiology, dentists, botox & fillers, salon and makeup services, yoga classes and more.

AVAILABLE SUITES

Coming Soon - Summer 2023:

Suite C4	285 SF	\$830/month
Suite D3	630 SF	\$1,840/month

Shared Medical Suites (furnished & fully equipped):

Suite 130	1,000 SF	\$295/day
-----------	----------	-----------

This suite has been beautifully built out as a medical office and Shared Suites are fully furnished. Lease today and open for business tomorrow!

PRICING AND TERMS

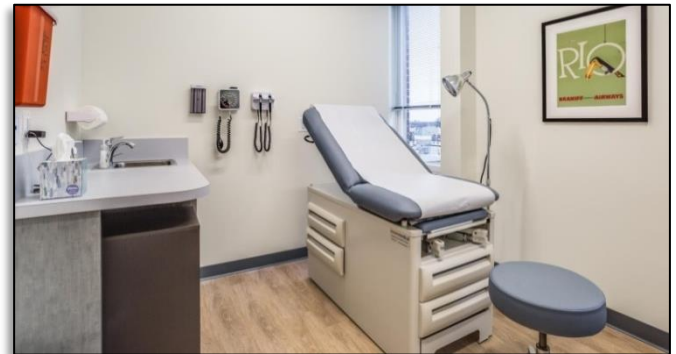
- Traditional leases start at \$35/sf with lease terms of 5-10 years.
- Shared Medical Space is currently available starting at \$295/day for minimum one day/week and one year commitment. Please ask which days of the week are still available.

CONTACT AND FURTHER INFORMATION

Cecilia Gondor, Managing Member

L&M Management LLC
101 S. Whiting Street, Suite 113
Alexandria, VA 22304
(w) (703) 751-5100

cgondor@rentatlandmark.com
www.LeaseAtLandmark.com



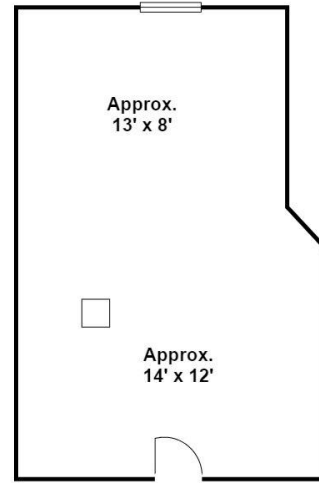
Pricing information is as of 2/2024 and is subject to change.

Bradlee Office Building

Suite C4
3543 W. Braddock Road
Alexandria, VA 22302

285 SF
\$830/month

This small suite is perfect for an independent practitioner and can be divided into a waiting room and treatment room. This floor of the building caters to beauty and medical-related fields but is suitable as an administrative office as well.

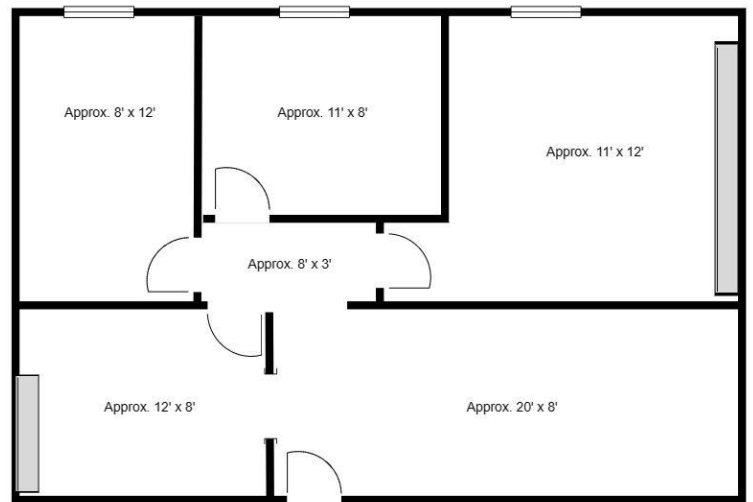


Bradlee Office Building

Suite D3
3543 W. Braddock Road
Alexandria, VA 22302

630 SF
\$1,840/month

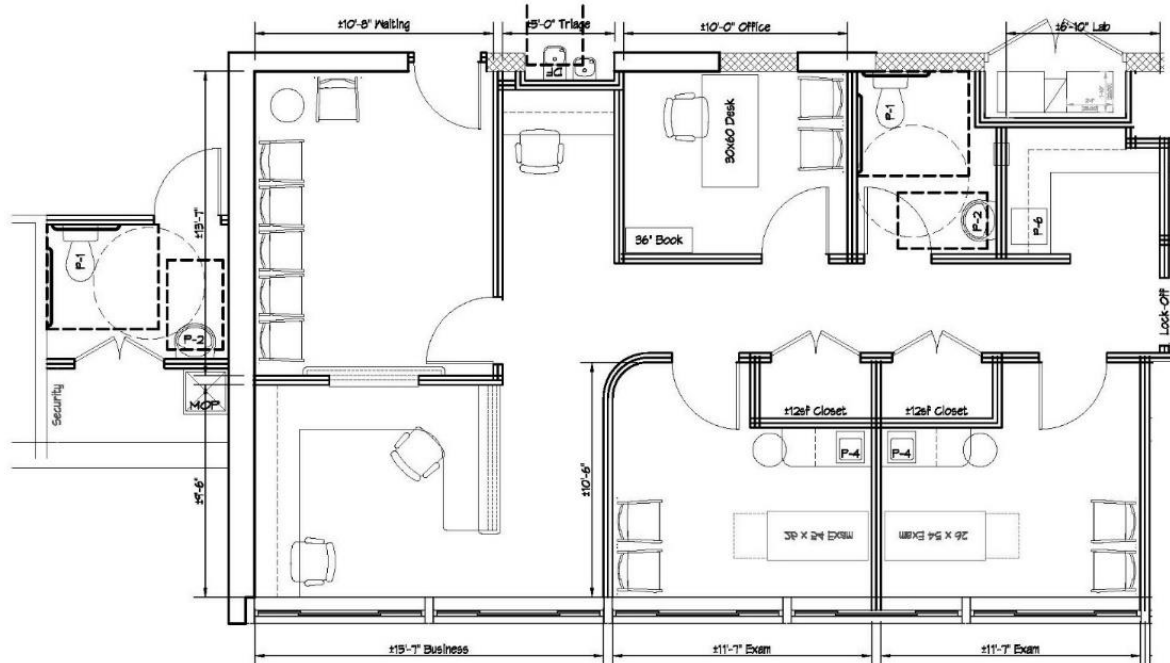
This suite would work well as an administrative office or medical facility. There are 3 window offices, a waiting room and reception room with a window to the waiting area. There is also the potential to add plumbing in certain rooms.



Bradlee Medical Building
Shared Medical Space

Suite 130
3541 W. Braddock Road
Alexandria, VA 22302

1000 SF
\$295/day
Full service,
fully furnished and
equipped



Pricing information is as of 2/2024 and is subject to change.

Pictures below are from the Shared Medical space exactly how it currently is. All furnishings, equipment and supplies are included in the Shared Medical Space pricing.

