

Bradlee Office Building

3543 W. Braddock Road
Alexandria, VA 22304

HIGHLIGHTS

- Just off I-395 at the King Street Exit
- Close to a variety of restaurants, banks, grocery, pharmacies, post office and much more
- Fully furnished and equipped medical office
- ADA compliant restrooms
- Generous storage
- Free surface parking
- All-inclusive pricing
- Other tenants in the building include: chiropractic and wellness services, general medicine, oncology, pediatric cardiology, dentists, botox & fillers, salon and makeup services, yoga classes and more.

AVAILABLE SUITES

Coming Soon - Summer 2023:

Suite D3 630 SF \$1,840/month

Shared Medical Suites (furnished & fully equipped):

Suite 130 1,000 SF \$295/day

This suite has been beautifully built out as a medical office and Shared Suites are fully furnished. Lease today and open for business tomorrow!

PRICING AND TERMS

- Traditional leases start at \$35/sf with lease terms of 5-10 years.
- Shared Medical Space is currently available starting at \$295/day for minimum one day/week and one year commitment. Please ask which days of the week are still available.

CONTACT AND FURTHER INFORMATION

Cecilia Gondor, Managing Member

L&M Management LLC

101 S. Whiting Street, Suite 113

Alexandria, VA 22304

(w) (703) 751-5100

cgondor@rentatlandmark.com

www.LeaseAtLandmark.com



Pricing information is as of 10/2023 and is subject to change.

COMING SOON – Summer 2023

Bradlee Office Building

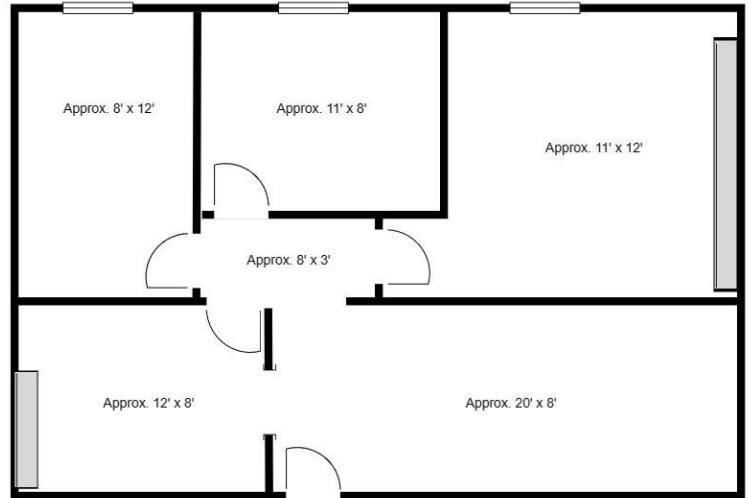
Suite D3

3543 W. Braddock Road
Alexandria, VA 22302

630 SF

\$1,840/month

This suite would work well as an administrative office or medical facility. There are 3 window offices, a waiting room and reception room with a window to the waiting area. There is also the potential to add plumbing in certain rooms.



Bradlee Medical Building

Shared Medical Space

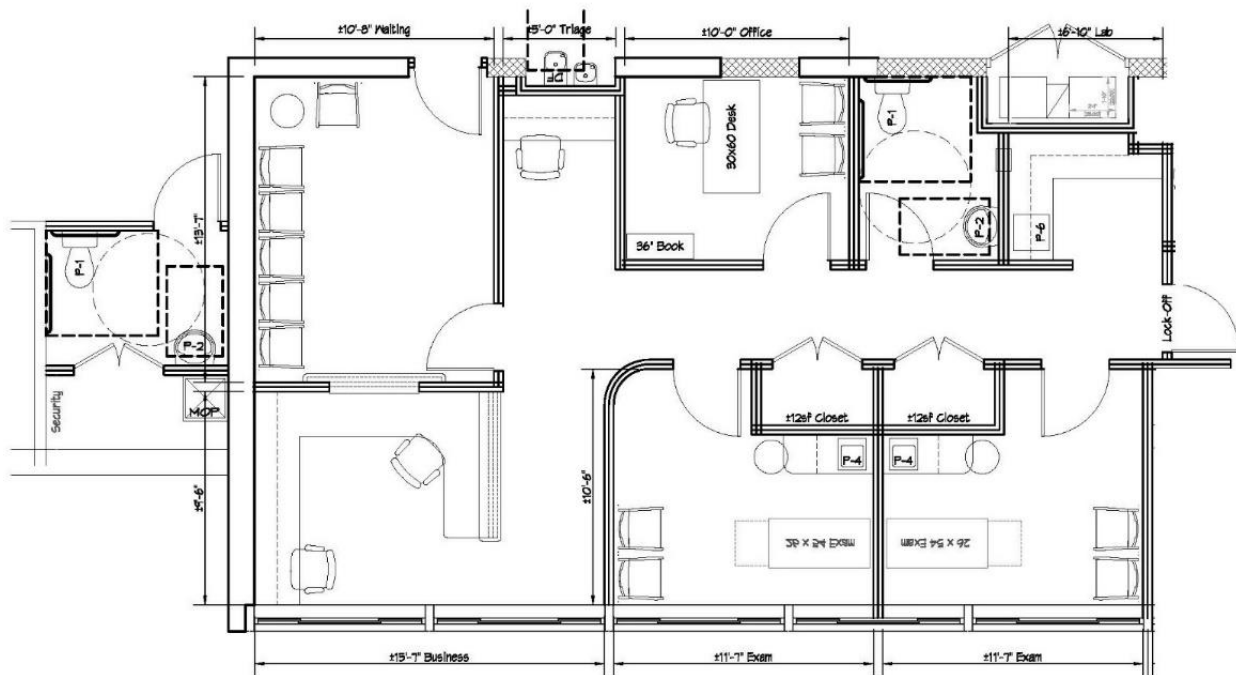
Suite 130

3541 W. Braddock Road
Alexandria, VA 22302

1000 SF

\$295/day Shared Medical Suite

Full service, fully furnished and equipped.



Pricing information is as of 10/2023 and is subject to change.

Pictures below are from the Shared Medical space exactly how it currently is. All furnishings, equipment and supplies are included in the Shared Medical Space pricing.

