

Bradlee Office Building

3543 W. Braddock Road
Alexandria, VA 22304

Medical Office Space Available

HIGHLIGHTS

- Just off I-395 at the King Street Exit
- Close to a variety of restaurants, banks, grocery, pharmacies, post office and much more
- Fully furnished and equipped medical offices
- ADA compliant restroom within each suite
- Generous storage
- Free surface parking
- All-inclusive pricing
- Other tenants in the building include: chiropractic and wellness services, general medicine, oncology, pediatric cardiology, dentists, therapist, sleep disorder services, yoga classes and more.

AVAILABLE SUITE

- Suite 110 1,000 SF \$3500/month

Shared Medical Suites (furnished & fully equipped):

- Suite 130 1,000 SF \$295/day
- Suite 400 1,930 SF \$350/day

These suites have been beautifully built out as medical offices and Shared Suites are fully furnished. Lease today and open for business tomorrow!

PRICING AND TERMS

- \$42/sf, traditional lease, 5-10 years
- Shorter-term leasing options are available starting at \$295/day for minimum one day/week and one year commitment. Please ask about details.

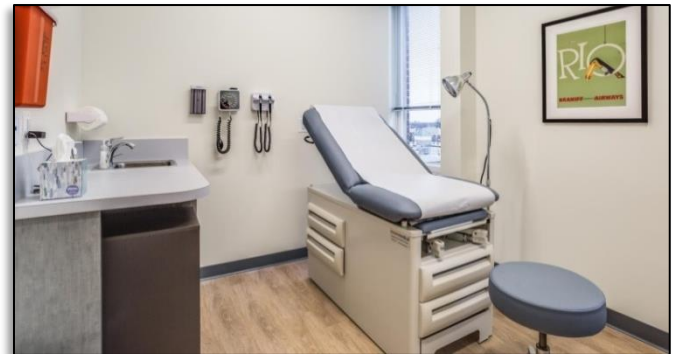
CONTACT AND FURTHER INFORMATION

Cecilia Gondor, Managing Member

L&M Management LLC
101 S. Whiting Street, Suite 113
Alexandria, VA 22304
(w) (703) 751-5100

cgondor@rentatlandmark.com

www.LeaseAtLandmark.com



Ask us about other buildings we manage in the Alexandria, Virginia area including:

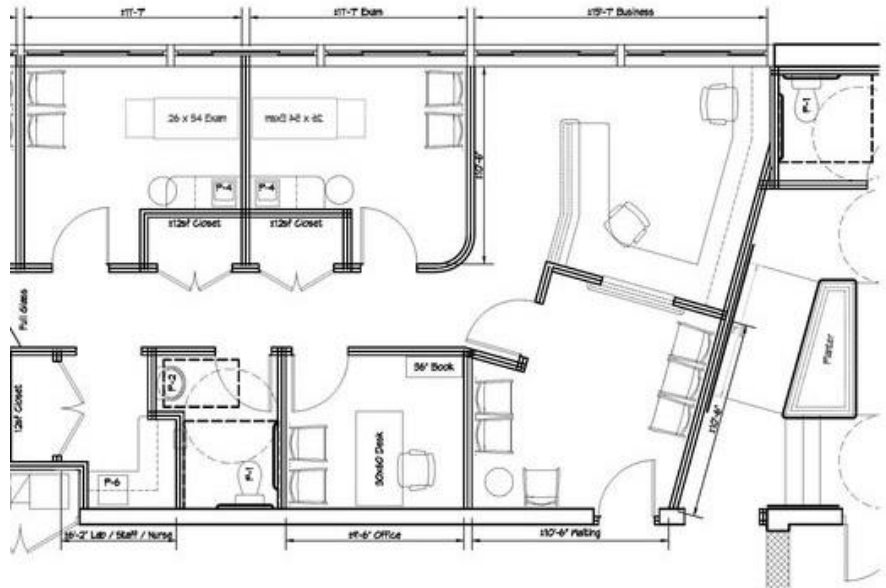
- 205 S. Whiting Street
- 101 S. Whiting Street
- 6000 Stevenson Avenue

pricing information as of 3/2021 and is subject to change

Bradlee Medical Building

Suite 110
3541 W. Braddock Road
Alexandria, VA 22302

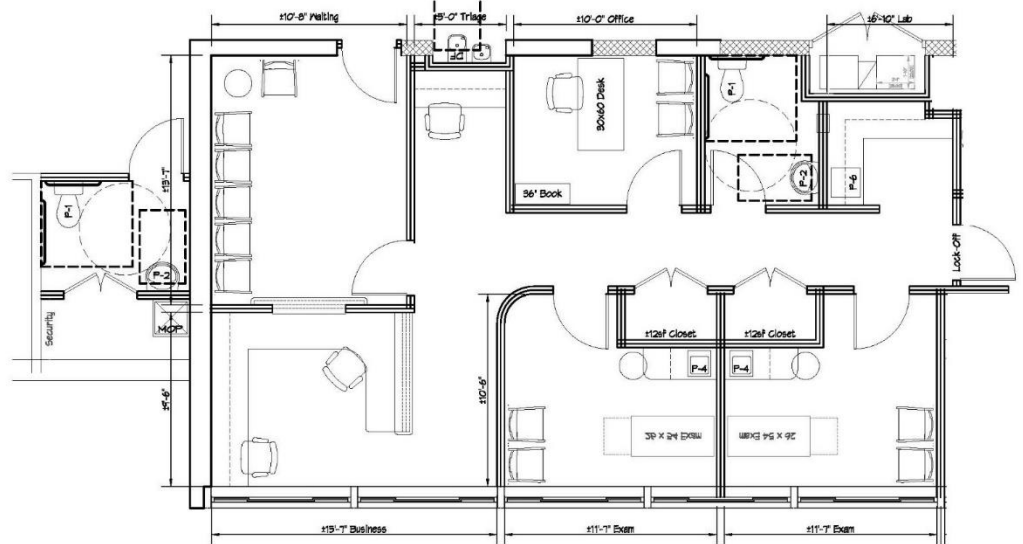
1,000 SF
\$42/SF newly renovated
Medical Suite, 1st Floor
Handicap Accessible
Also available fully furnished and
equipped for \$48/SF



Bradlee Medical Building

Suite 130
3541 W. Braddock Road
Alexandria, VA 22302

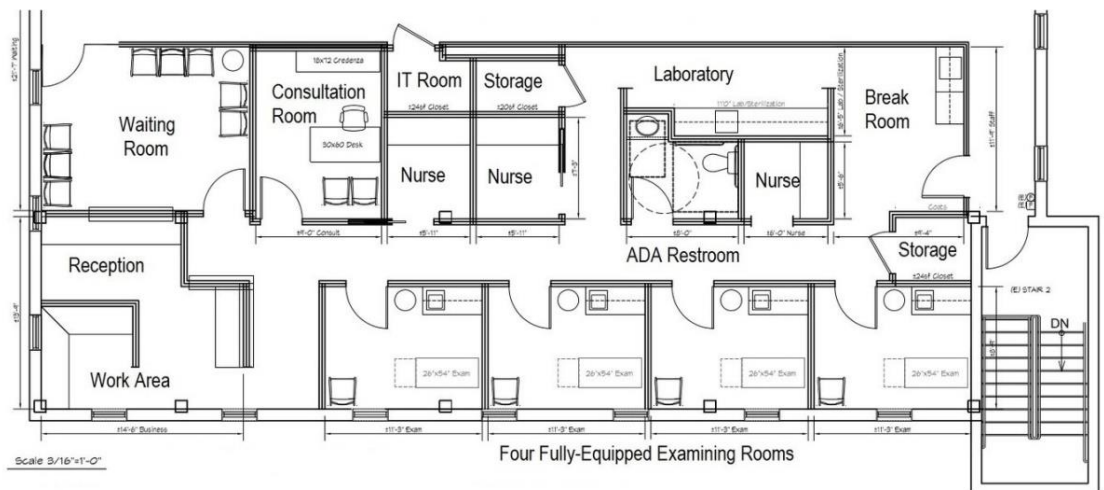
1000 SF
\$295/day Shared Medical Suite
Full service, fully furnished and
equipped



Bradlee Office Building

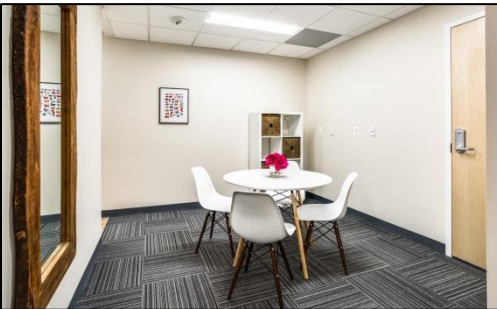
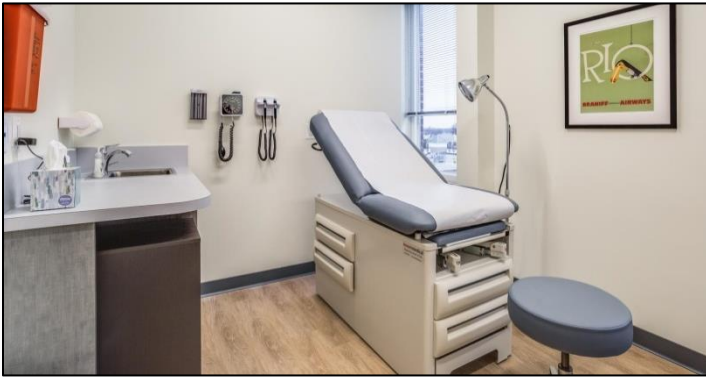
Suite 400
3543 W. Braddock Road
Alexandria, VA 22302

1,930 SF
\$350/day Shared Medical
Full service, fully
furnished and equipped



Pricing information is as of 3/2021 and is subject to change.

Pictures below are from the space exactly how it currently is. All furnishings, equipment and supplies are included in the Shared Medical Space pricing.



Cecilia Gondor, Managing Member
L&M Management LLC
101 S. Whiting Street, Suite 113
Alexandria, VA 22304
(w) (703) 751-5100
cgondor@rentatlandmark.com
www.LeaseAtLandmark.com